



TAILIFT GROUP

CNC Press Brake

TCH50 / TCH70 / TCH100 / TCH160 / TCH200 / TCH250 / TCH320



- CT15 Controller
- Hoerbiger Servo Hydraulic System
- Synchronous Position Feedback On Both Sides With Linear Scale
- The back gauge is equipped with servo motor and high-precision ball screw



CNC Press Brake

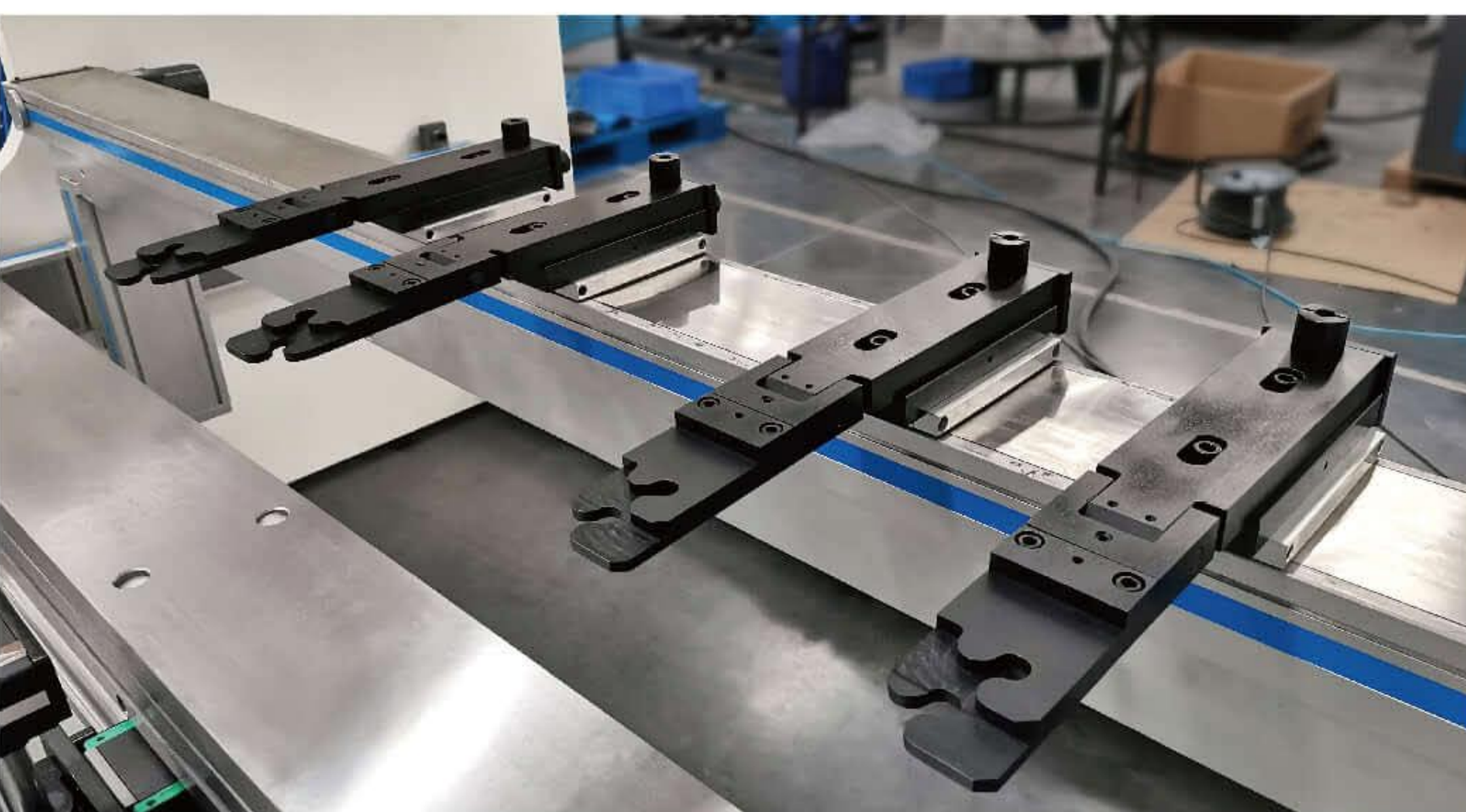
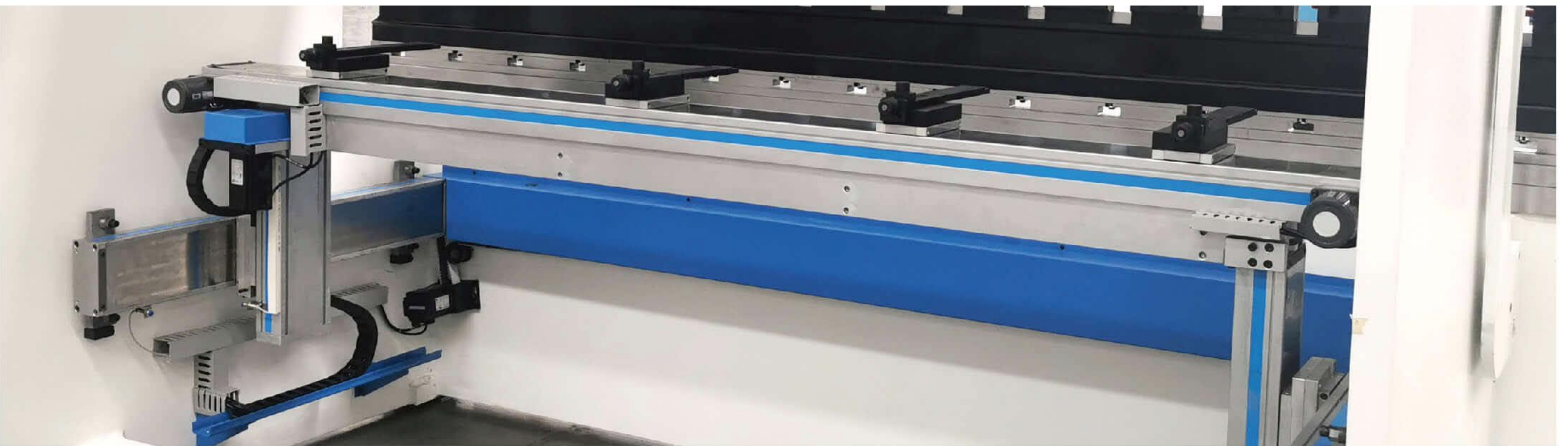


Automatic Back Stopper Device

The positioning axis is driven by servo motor and is driven by two sets slide rods.

Compact mechanical structure, fast operation speed, high stability and high repeatability positioning accuracy.

The stopper can be moved to the desired position by servo motor. (Automatic movement is optional)





CNC Press Brake

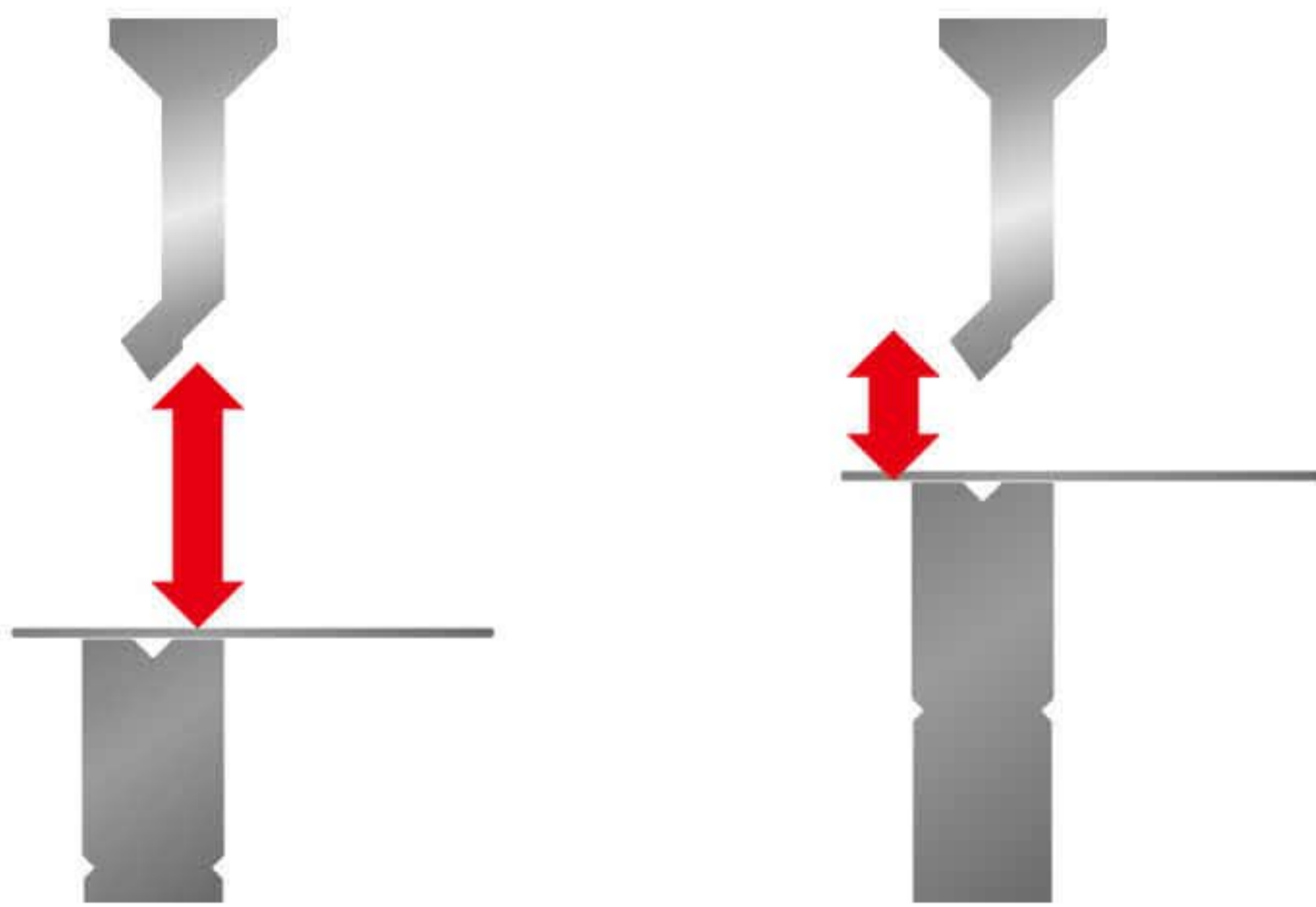
Quick Release and Clamping Device

Quick clamping Device for upper tools, the installation is simple and stable, prevent upper tools falls down, quick release and clamping time, and reduces setting time.



Precision Liner Scale

Minor corrections can be done in the stopper by screws.
Linear scale feedback actual position and feedback control servo valve at any position.



Arbitrary lower limit

Use the Liner Scale to directly control the height of the top beam stop to avoid unnecessary blank strokes.
Substantially improve production efficiency.

Movable Front Loader Bracket

Fitted in front of the worktable, position of the front loader bracket can be adjusted manually as requested.





CNC Press Brake

Laser safety device (Option)

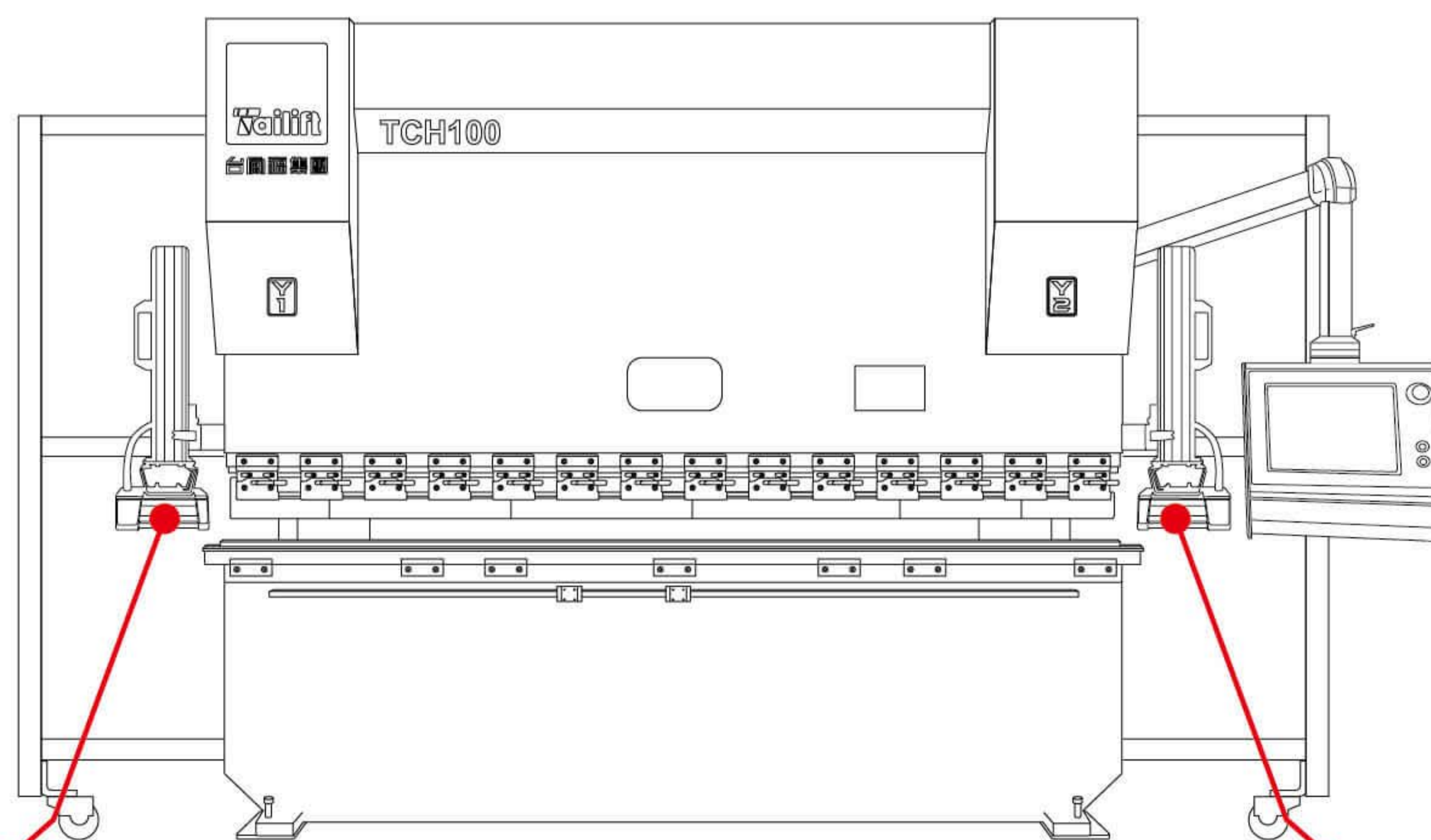
Laser safety device protects the press brake operator from the danger of crushing between the moving and fixed part of the machine.

The Laser safety device is mounted on the moving part of the machine, and the protection zone moves with the part. When an obstacle is detected, such as an operator fingers, detection is immediate and the machine can be stopped.

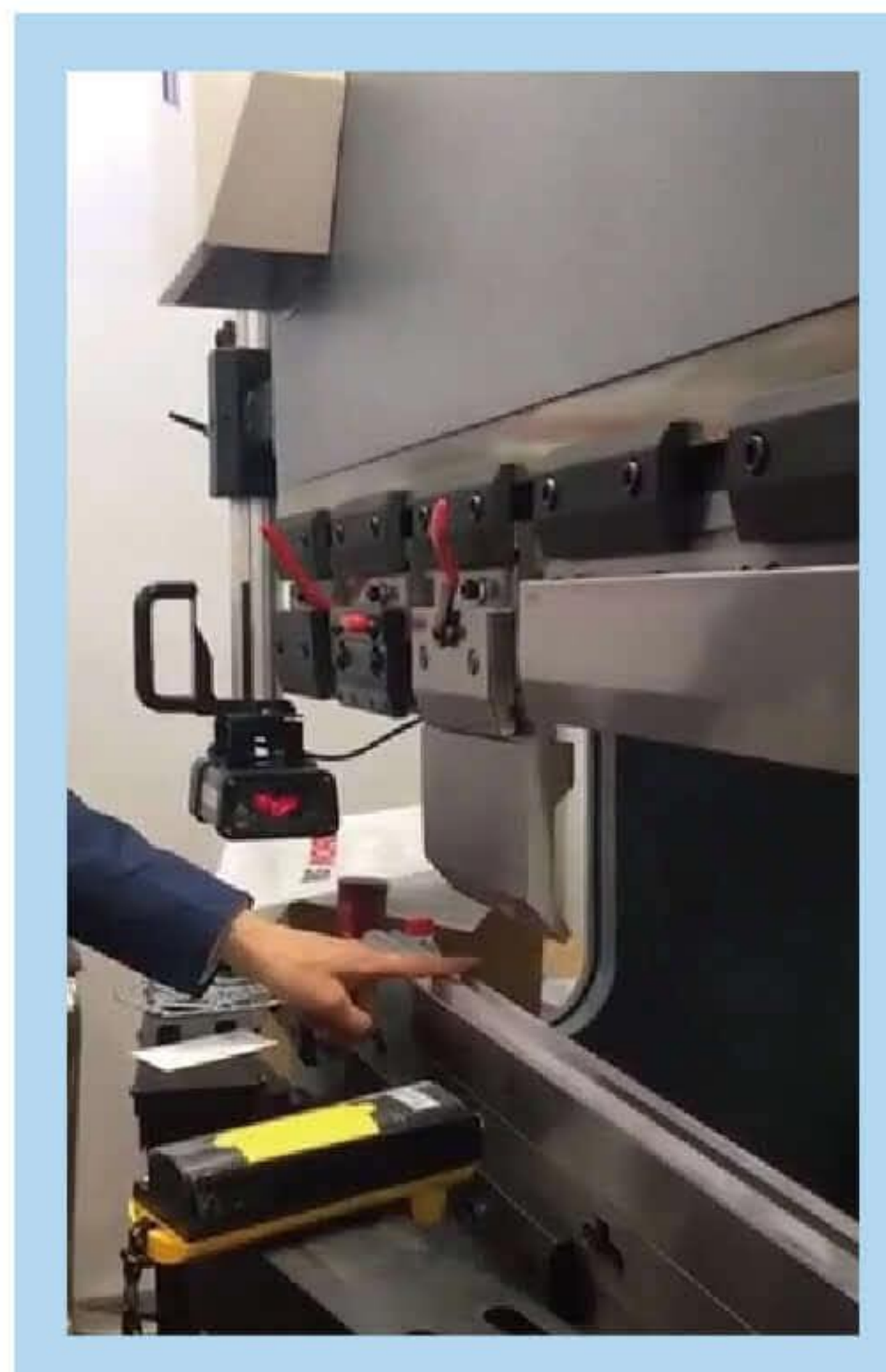
Laser Safety Device for Press Brake



Emitter



Receiver





CNC Press Brake

The appearance of CT15 CNC system is as follows:

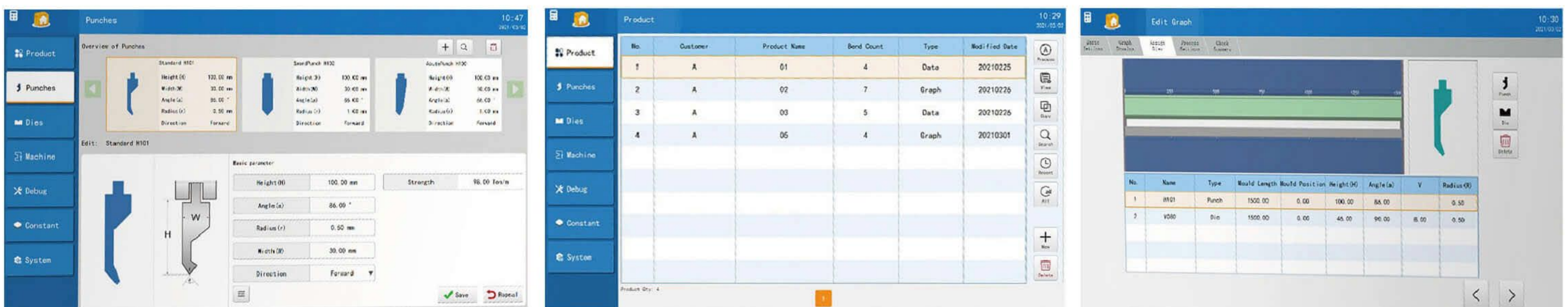
The system uses 15.6" TFT LCD screen with resolution of 1920*1080px and high-sensitivity touch screen, which can be operated using gloves or connected to mouse.

Manual/automatic, oil pump and emergency stop buttons are respectively installed below the system screen.

There are two USB ports at the bottom of the system for connecting external drives such as USB, keyboard, and mouse.

The Linux operating system is stable and reliable. It only takes a few seconds to switch on.

The content will not change. It can interact with industrial robots and solve the problem of personnel shortage through automation. The system has a rich interface and can be easily connected to an automated production line.



MAIN IMPORTANT PARTS

No	Name	Model	Origin
1	CNC system	CT15	Taiwan
2	Hydraulic valve group	HOERBIGER	Germany
3	Grating ruler	GIVI	Italy
4	X servo motor	Innovance	China
5	R servo motor	Innovance	China
6	Oil pump	HOERBIGER	Germany
7	Servo main motor	Tailift	Taiwan
8	Sealing rings	NOK	Japan
9	Hose connectors	PARKER	USA

SPECIFICATIONS

Model	Unit	TCH50 1.6M	TCH70 2M	TCH70 2.5M	TCH100 2.5M	TCH100 3.2M	
Force	kN	500	700	700	1000	1000	
Bending Length	mm	1600	2000	2500	2500	3200	
Distance Between Side Frames	mm	1230	1700	2100	2100	2700	
Throat	mm	260	320	320	320	320	
Bending Stroke	mm	200	200	200	250	250	
Effective Open Height	mm	495	495	495	545	545	
Operating Height	mm	595	595	595	645	645	
Drive Motor	kw	7.5	11	11	15	15	
Oil tank Capacity	L	190	230	280	380	380	
X-Axis speed	mm/s	320	320	320	320	320	
R-Axis speed	mm/s	320	320	320	320	320	
Y-Axis Rapid traverse speed	mm/s	250	250	230	240	240	
Y-Axis working speed	mm/s	12	12	12	11	11	
Y-Axis raising speed	mm/s	200	200	200	180	160	
Dimensions	Length (B)	mm	1700	2250	2780	3010	3710
	Width (C)	mm	1480	1580	1580	1670	1670
	Height (A)	mm	2100	2130	2130	2720	2720
Weight	kg	4000	5300	6100	7800	9100	

Model	Unit	TCH100 4.1M	TCH160 2.5M	TCH160 3.2M	TCH160 4.1M	
Force	kN	1000	1600	1600	1600	
Bending Length	mm	4100	2500	3200	4100	
Distance Between Side Frames	mm	3300	2100	2700	3300	
Throat	mm	320	400	400	400	
Bending Stroke	mm	250	250	250	250	
Effective Open Height	mm	545	545	545	545	
Operating Height	mm	645	620	620	620	
Drive Motor	kw	15	18.5	18.5	18.5	
Oil tank Capacity	L	420	300	330	430	
X-Axis speed	mm/s	320	320	320	320	
R-Axis speed	mm/s	320	320	320	320	
Y-Axis Rapid traverse speed	mm/s	220	200	200	200	
Y-Axis working speed	mm/s	13	13	13	12	
Y-Axis raising speed	mm/s	160	180	160	160	
Dimensions	Length (B)	mm	4610	3030	3730	4630
	Width (C)	mm	1770	1680	1680	1790
	Height (A)	mm	2720	2720	2720	2720
Weight	kg	10900	8700	10100	12100	

specifications are subject to change without prior notice.

SPECIFICATIONS

Model	Unit	TCH160 5.1M	TCH160 6.1M	TCH200 3.2M	TCH200 4.1M	
Force	kN	1600	1600	2000	2000	
Bending Length	mm	5100	6100	3200	4100	
Distance Between Side Frames	mm	4600	5600	2700	3600	
Throat	mm	400	400	400	400	
Bending Stroke	mm	250	250	250	250	
Effective Open Height	mm	545	545	545	545	
Operating Height	mm	620	620	620	620	
Drive Motor	kw	18.5	18.5	22	22	
Oil tank Capacity	L	430	430	380	420	
X-Axis speed	mm/s	320	320	320	320	
R-Axis speed	mm/s	320	320	320	320	
Y-Axis Rapid traverse speed	mm/s	160	150	180	160	
Y-Axis working speed	mm/s	12	12	13	13	
Y-Axis raising speed	mm/s	120	110	160	150	
Dimensions	Length (B)	mm	5630	6630	3730	4630
	Width (C)	mm	1800	1800	1680	1790
	Height (A)	mm	2960	3160	2720	2720
Weight	kg	17000	20000	10500	14100	

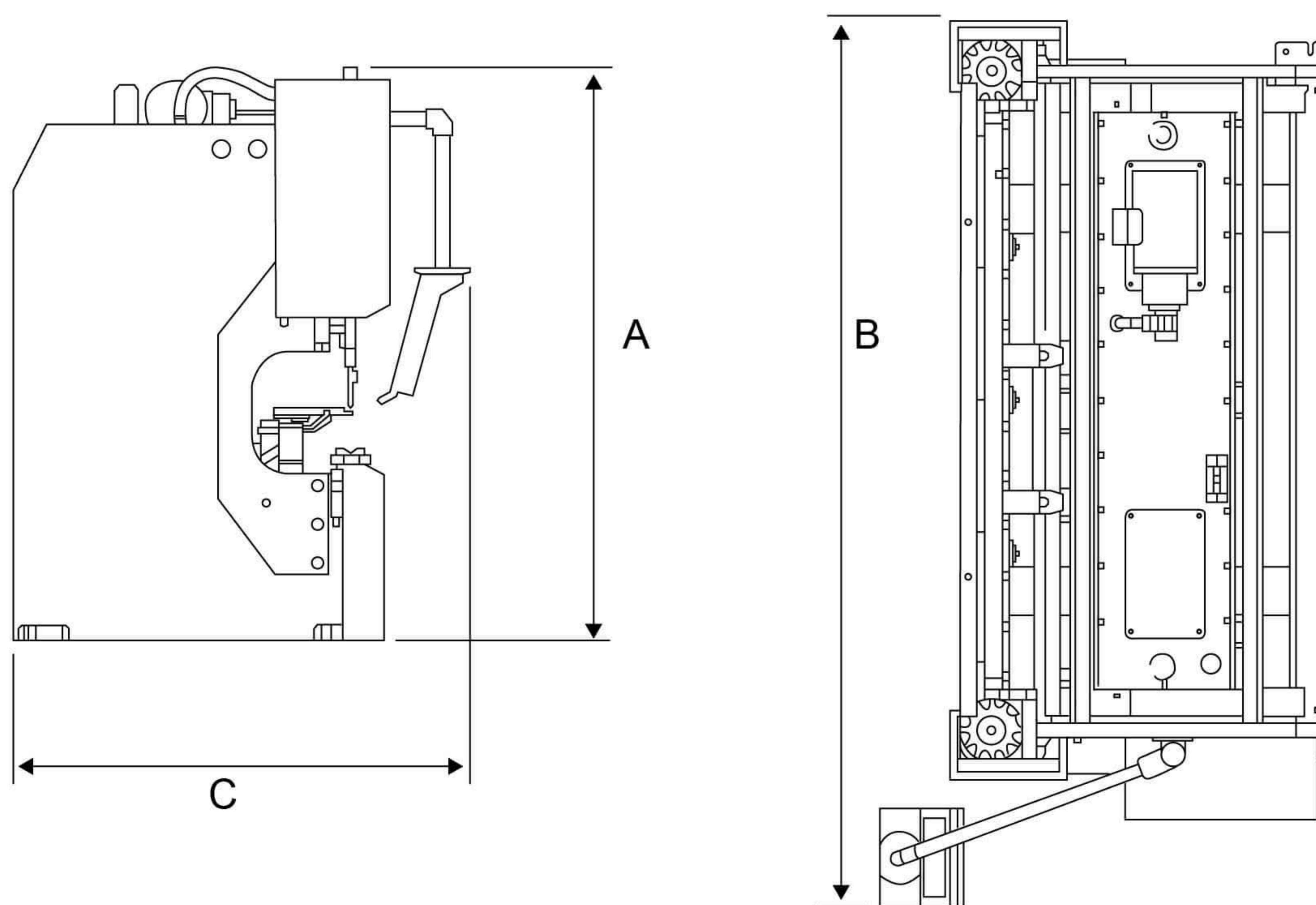
Model	Unit	TCH250 2.5M	TCH250 3.2M	TCH250 4.1M	TCH250 5.1M	
Force	kN	2500	2500	2500	2500	
Bending Length	mm	2500	3200	4100	5100	
Distance Between Side Frames	mm	2100	2700	3300	4600	
Throat	mm	400	400	400	400	
Bending Stroke	mm	250	250	250	250	
Effective Open Height	mm	545	545	545	545	
Operating Height	mm	645	645	645	645	
Drive Motor	kw	37	37	37	37	
Oil tank Capacity	L	320	400	430	430	
X-Axis speed	mm/s	320	320	320	320	
R-Axis speed	mm/s	320	320	320	320	
Y-Axis Rapid traverse speed	mm/s	150	150	130	120	
Y-Axis working speed	mm/s	13	13	12	12	
Y-Axis raising speed	mm/s	160	150	130	100	
Dimensions	Length (B)	mm	3050	3750	4650	5650
	Width (C)	mm	1920	1920	1920	1920
	Height (A)	mm	2975	2975	2975	3125
Weight	kg	11700	14000	16000	21200	

specifications are subject to change without prior notice.

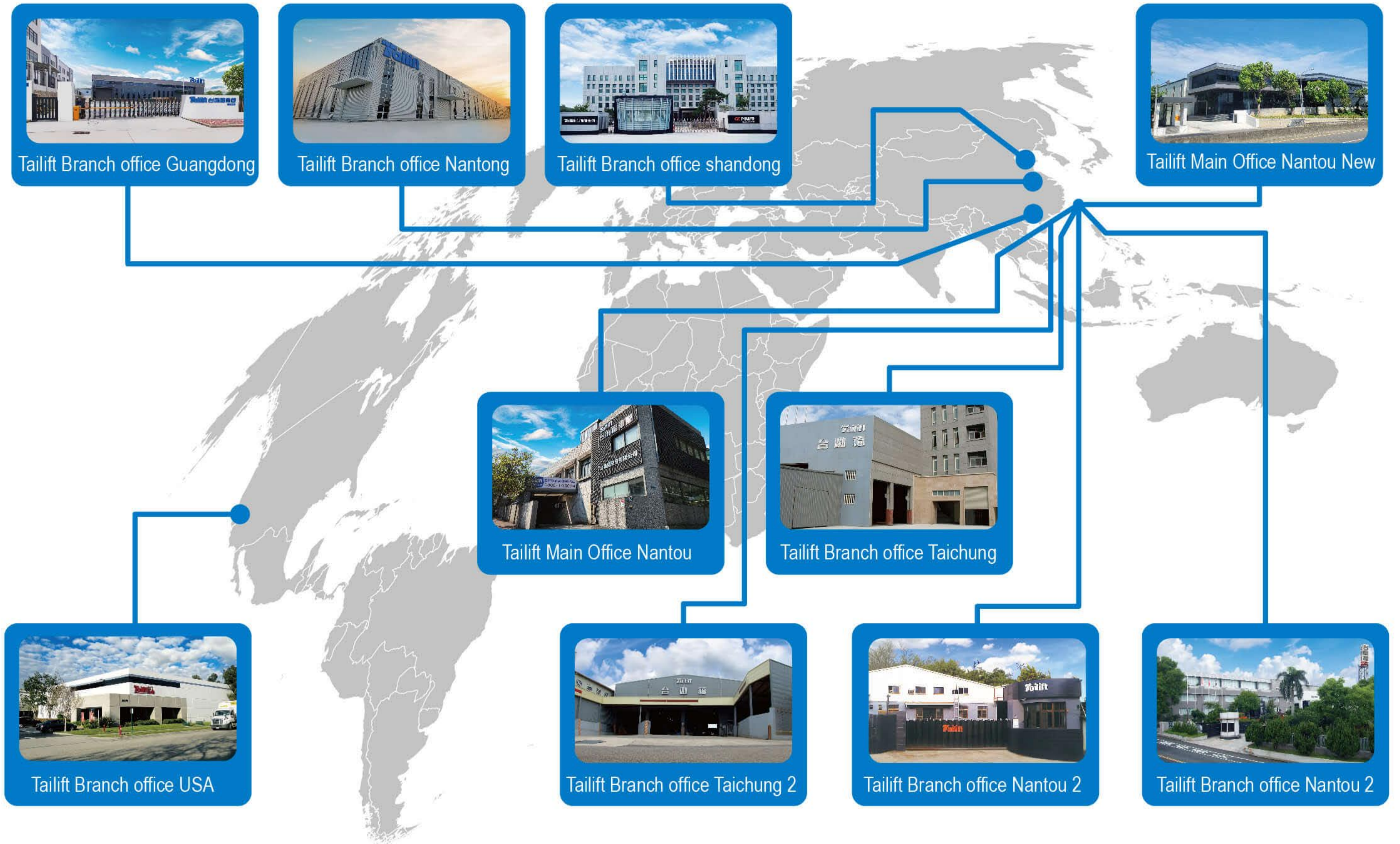
SPECIFICATIONS

Model	Unit	TCH250 6.1M	TCH320 3.2M	TCH320 4.1M	TCH320 5.1M	TCH320 6.1M	
Force	kN	2500	3200	3200	3200	3200	
Bending Length	mm	6100	3200	4100	5100	6100	
Distance Between Side Frames	mm	5600	2700	3300	4600	5600	
Throat	mm	400	400	400	400	400	
Bending Stroke	mm	250	310	310	310	310	
Effective Open Height	mm	545	600	600	600	600	
Operating Height	mm	645	695	695	695	695	
Drive Motor	kw	37	45	45	45	45	
Oil tank Capacity	L	460	410	460	460	460	
X-Axis speed	mm/s	320	320	320	320	300	
R-Axis speed	mm/s	320	320	320	320	220	
Y-Axis Rapid traverse speed	mm/s	120	110	110	100	100	
Y-Axis working speed	mm/s	10	12	12	10	10	
Y-Axis raising speed	mm/s	100	100	100	90	90	
Dimensions	Length (B)	mm	6650	3930	4830	5830	6830
	Width (C)	mm	1920	2110	2110	2150	2150
	Height (A)	mm	3325	3205	3205	3690	3855
Weight	kg	24600	17700	20300	26100	30400	

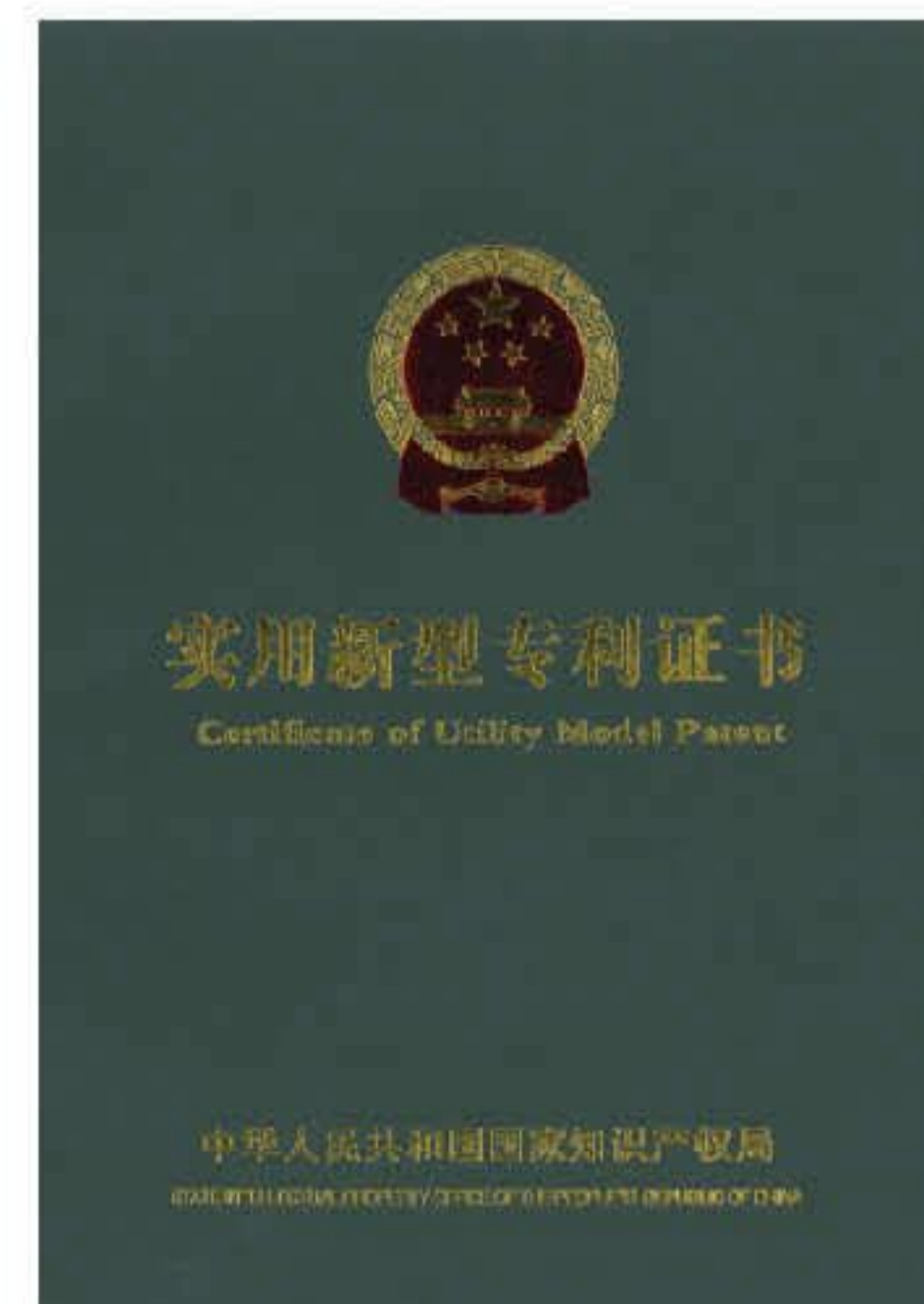
FLOOR PLAN



DISTRIBUTION COMPANIES IN THE WORLD



TAILIFT'S GLORY





CNC Press Brake



Founded in 1973 in Taiwan, Tailift Group's turnover is around 3 billion USD and selling machines with own brand "Tailift" worldwide. Product under Tailift brand includes material handling equipment, sheet metal machine, laser cutting and welding machine, machine tools and drilling machines. For almost 50 years' development, Tailift group is toward to a 100 years company.



Ultimate machining; Excellent Quality.



Tel: + 886-49-225-4300 Fax: + 886-49-225-4302
170 Cheng gong 3rd Road, Nangang Industrial Zone, Nantou City, Taiwan(R.O.C.)
TEL:+886-4-2566-6100 FAX:+886-4-2567-1670
No. 269, Sec. 1, Shenlin Rd., Daya Dist., Taichung City 428007 , Taiwan (R.O.C.)

