

The Tailift logo features a stylized white 'T' icon composed of three horizontal bars of varying lengths, followed by the word 'ailift' in a bold, white, sans-serif font. The entire logo is set against a blue background with a subtle geometric pattern.

Hand-held Laser Welding Machine

Super advantages of "Thin" sheet metal

Laser 7+1 Welding and Cutting Process
Professional All-in-One Machine

Get started in 10 minutes

2-10 times efficiency improvement

Precision Welding Minimal Effects
of Thermal Distortion

360° flexible movement

Three safety protections

The Tailift logo is displayed in white against a blue background. It consists of a stylized 'T' icon followed by the word 'ailift' in a bold, sans-serif font.

Ultimate machining; Excellent Quality.

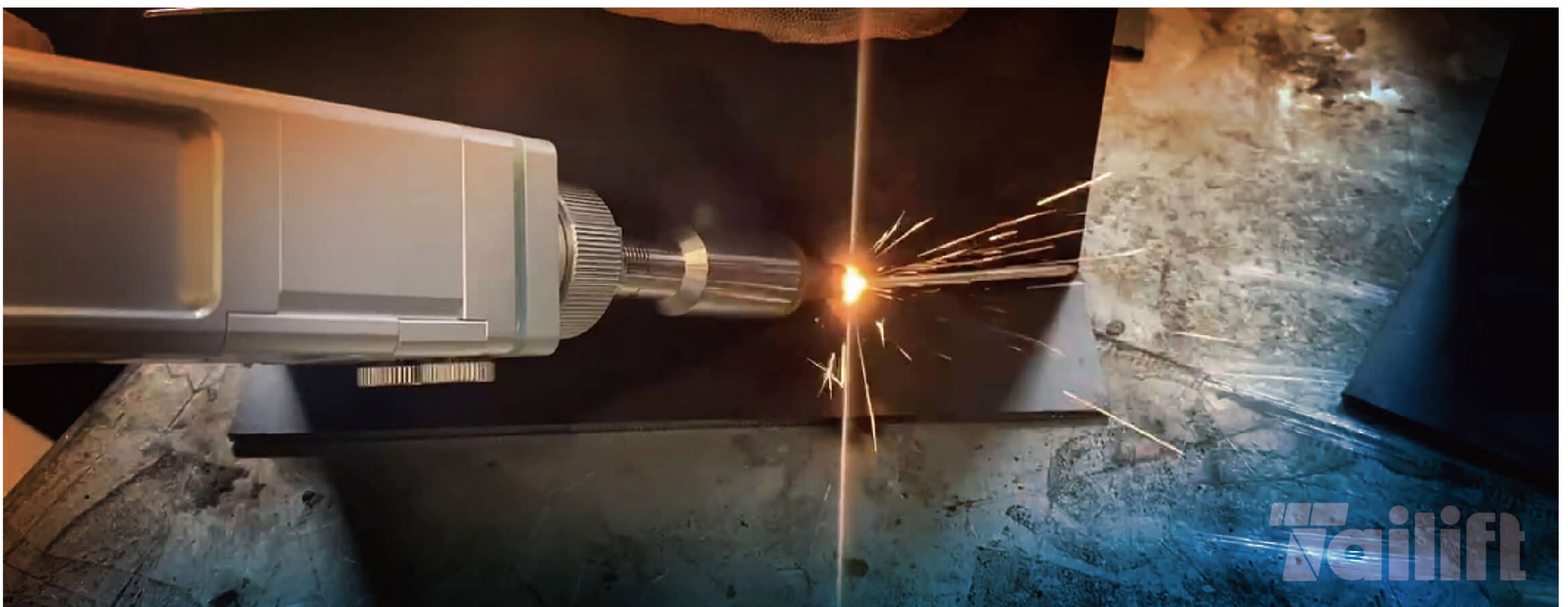
Hand-held Laser Welding Machine

Tailift Laser is a manufacturer since 1973 dedicated to only fiber laser cutting machine from 1000W to 12000W

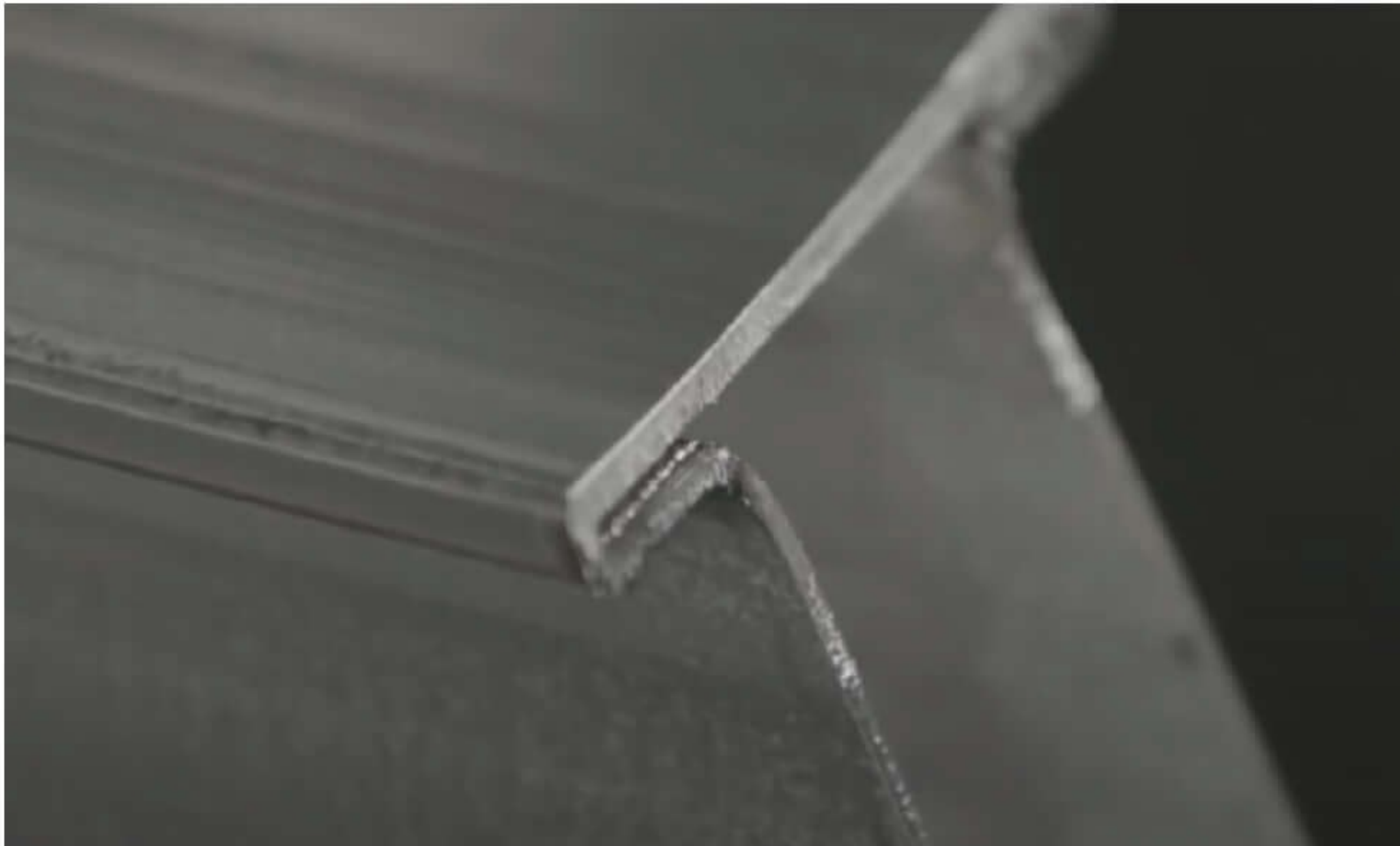
Application :

railings of stairs and elevator , shelves, oven, stainless steel guardrail, electrical box, stainless steel home supplies, kitchen ware, electrical energy, furniture, car manufacturer, tool & machinery, military, ship industries etc.

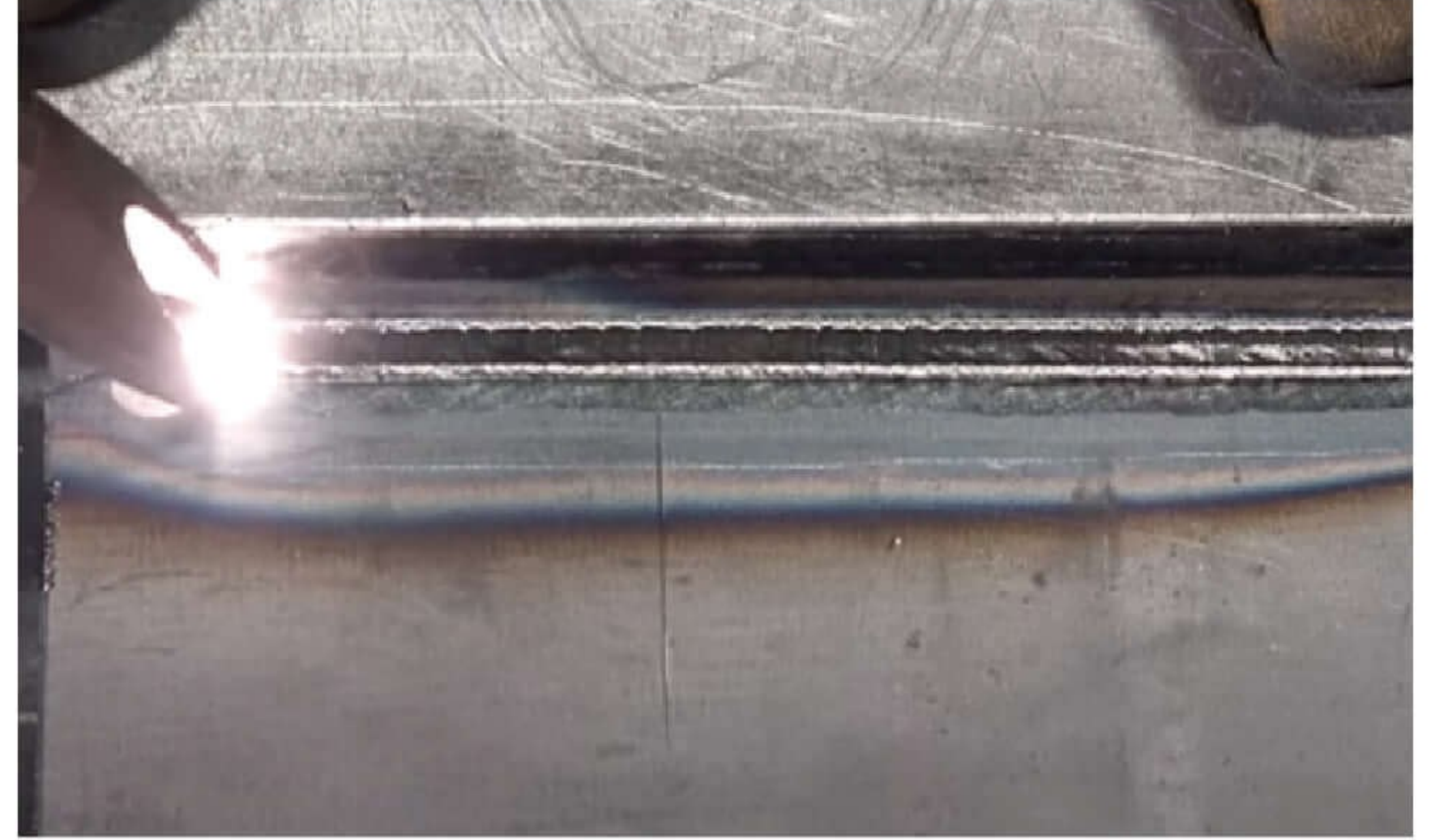
- **Modular compact design :** Small layout space, beautiful and generous Easy to maintain and debug.
- **Simple operation :** the operator will get started quickly even without any experience.
- **Flexibility :** it's suitable to weld any shaped products.
- **High efficiency :**
 - the welding speed is 2-10 times faster than the traditional welding processing speed.
 - compatible with a wide range of models, and short changeover times.
- **High welding quality :**
 - no distortion, no welding scar, and very strong.
 - Welding seam surface smooth and beautiful, no need to make further grinding processing, save time and cost



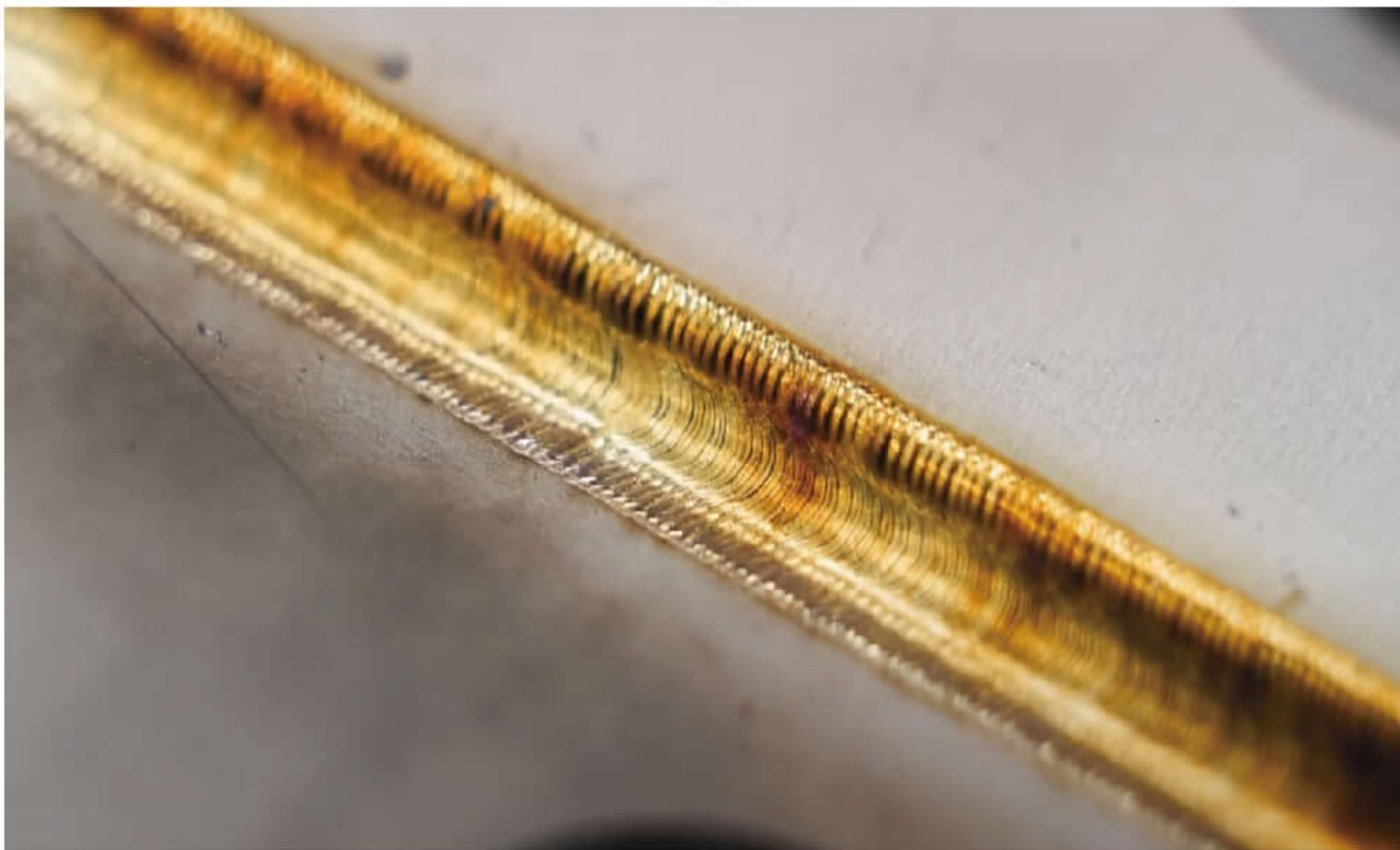
Laser Cutting



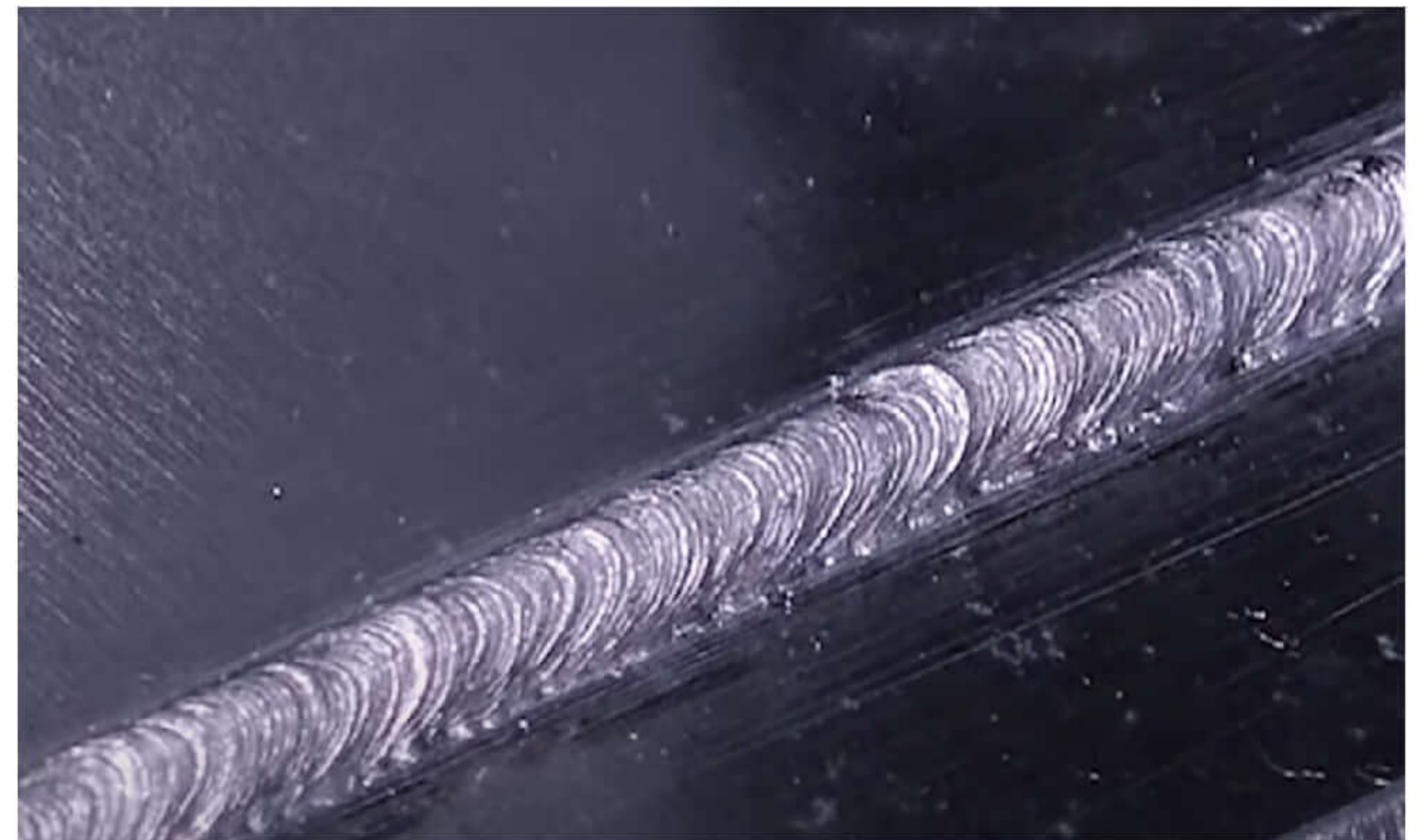
Laser Cutting



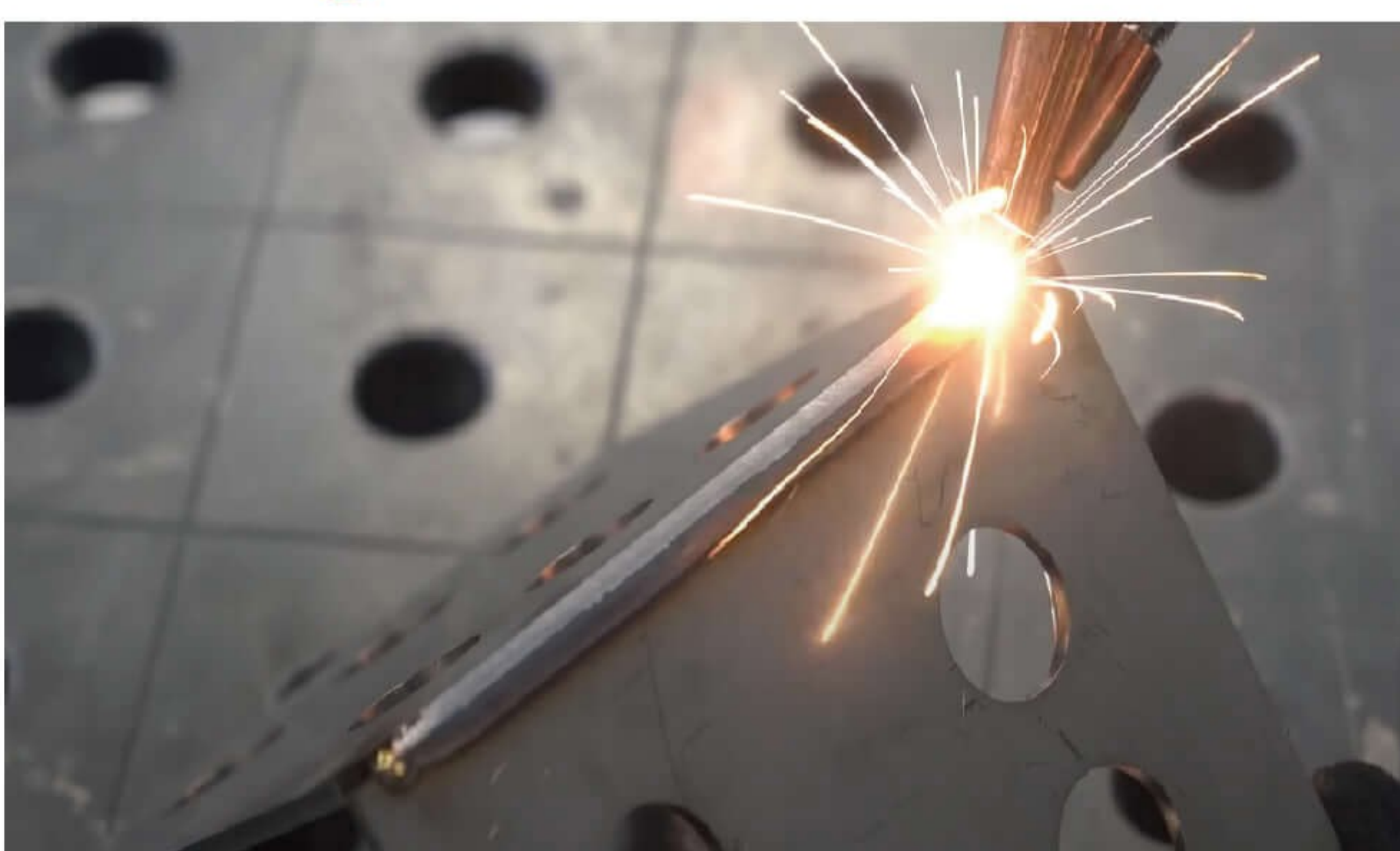
No filler Welding



No filler Welding



Welding with Filler



Welding with Filler



Tailift Hand-held Laser Welding Machine

Description	LW1000	LW1500	LW2000
Laser Power(W)	1000	1500	2000
Laser wavelength(nm)	1080		
Fiber Cable Length(m)	Standard 10M Option 15M		
Cooling System	Water Chiller		
Targeting	Positioning Light Spot		
Welding Mode	Continuous,Interval,Wire Feed		
Ambient Operating Temperature	15~35°C		
Welding Thickness(mm) Carbon Steel / StainlessSteel	≤2	≤3	≤4
Welding Thickness(mm) Aluminum / Copper	≤1.5	≤2.5	≤3
Welding Thinnest(mm)	≥0.8		
Working Voltage(V)	AC220 ±10%	AC220 ±10%	AC220 ±10%

■ Specifications are subject to change without prior notice.



Resonator	Laser Wavelength(nm)	1080nm
	Laser Power(W)	1000W / 1500W / 2000W
	Optical Fiber output	Single Cable
	Fiber Model	Continuous
	Fiber Length(m)	10m
	Fiber Bending Radius(mm)	200mm
	Power Consumption(kW)	<6kW
	Power Stability	±1%
	Power Requirement	220V / 50Hz
	Ambient Operating Temperature	10~35°C
	Laser Water-Cooled Scope	25~28°C
	Cooling System	Water Chiller
	Hand-held Laser Welding Handle Weight	≤1kg
	Aiming position	Red Light
Water-Cooled Machine	Refrigerant	R410A
	Filter Fineness	50um
	Power Requirement	220V / 50Hz
	Noise	<70dB
	Ambient Operating Temperature	10~35°C
	Automatic protection	alarm function
Operation System	Laser Model	One dimension scan
	Laser Scan Model	0~300mm
	Depth of Focus	≥10mm
	Operating Mode	Manually operable / Automatic

■ Specifications are subject to change without prior notice.

Tailift Hand-held Laser Welding Machine





Tailift



No. 170, Chenggong 3rd Rd., NanKang, Nantou City, 540028, Taiwan (R.O.C.)

台灣南投市南崗工業區成功三路170號 郵遞區號:540028

TEL:+886-49-2254300 FAX:+886-49-225-4302